

amore

900m³/hr

EX-Drive™ External Motor System

Product Codes: AM900

AM900

Installation & Operation Manual



amorehomes.co.nz

Electrical Specifications
230-240V ~ 50Hz 57W

AM900 - 900m³/hr EX-Drive™ External Motor System Installation and Operator Instructions

WARNINGS

This appliance is not intended for use by persons (including children) with reduced physical or mental capabilities, or lack of experience or knowledge, unless they have been given supervision or instruction concerning use of the appliance by a person responsible for their safety.

Children should be supervised to ensure that they do not play with this appliance.

Electrically isolate this appliance before maintenance.

Avoidance of back flow. Care should be taken to avoid the back flow of gases into the room from the open flue of gas or other open fire appliances.

If this fan unit is supplied as part of another system (rangehood or other) and is controlled by that system, this fan unit shall only have its power supply controlled from that system (rangehood or other).

Installation of fan unit

Adhesives alone are not considered to be a reliable fixing means and mechanical fixing must be used to hold this unit. Metal banding or other secure fastening method shall be used for retention.

If supply cord is damaged, it must be replaced by the manufacturer, its service agent or similar qualified persons in order to avoid a hazard.

Important Notice:

The AM900 have a minimum mounting height of 2.1m above the ground or walkway.

For mounting below 2.1m, special order models AM900-LM are required. Please contact Amore.

Coastal Installation

If unit is installed within two kilometres of the coast, additional corrosion protection should be applied to the exterior metal components of the motor.

General Notes - Fitment below 2.1 Metres

The AM900-LM is available as special order variants for fitment below 2.1metres.

These fan units are factory fitted with compliant finger guard.

The guard does not affect the installation procedure.

Please order AM900-LM if installation below 2.1 metres is required.

The LM indicates a finger guard is required.

General Notes on Installation and Use

This fan unit is designed to be installed using 150mm (ISD) PVC pipe as the initial connection duct to the fan module, and is supplied with a 150mm (ISD) PVC pipe to 200mm duct and bell-mouth adaptor.

This fan is suitable for connection to ducting runs with a minimum inlet area of 200mm and length up to 6 metres maximum (check with supplier if longer duct length required). ducting must be extended sufficiently to present a smooth air passage with bends of at least the radius of twice the diameter of the duct.

Recommended electrical installation

The motor should be connected to the 3-pin plug socket lead from the rangehood or a wall mounted switch with a ceiling cavity mounted GPO. The switch supply must be connected via a mains isolating device.

The outlet connection to the fan should be in an accessible location within the cavity.

Recommended Installation Distance

AM900, recommended 5 metres of flexible ducting and with at least two bends.

NOTE: Installations less than 5 metres will increase extraction power this will result in higher noise level.

Maximum duct length is 6 metres. Check with supplier if longer duct length is required.

Do not reduce the duct size at any time and avoid sharp bends.

Roof Installation

Recommended duct length: 5 metres with a minimum of 3 metres.

Mount 150mm (ISD) rigid PVC pipe securely to beams, trusses or other appropriate structures. The pipe should be mounted vertically with the roof penetration being sealed using a Dektite or other appropriate sealing membrane or device.

Ensure that the PVC pipe **protrudes a minimum of 60mm** past the top of the Dektite, checking that the fan assembly clears the roof cladding at upper edge.

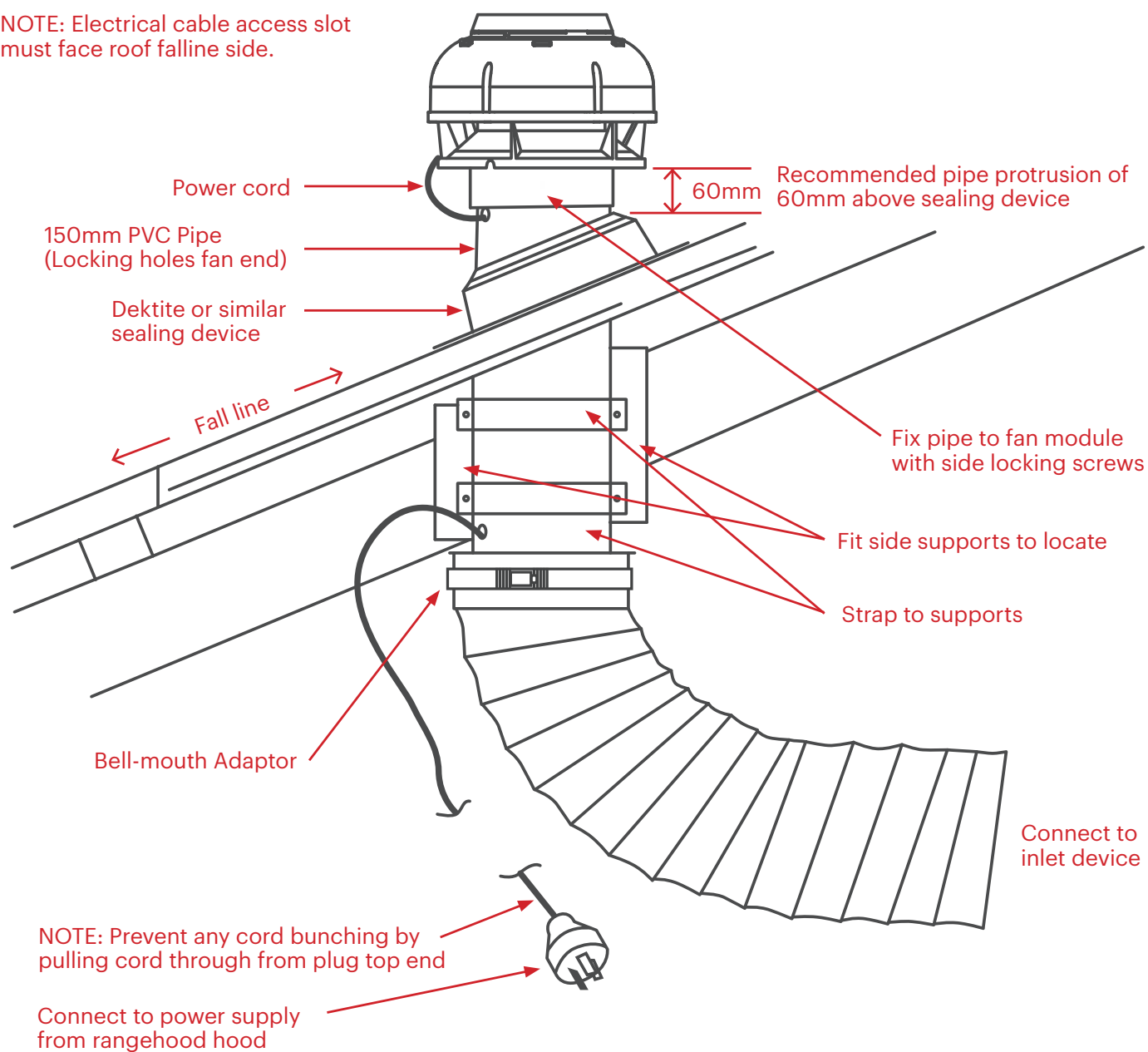
Pass power cord and plug through mounting flange and pipe, then out the slotted PVC pipe for connection to the power supply.

Do not insert plug into socket outlet or switch on until installation has been completed. Fit fan module to pipe and fix in position using side locking screws.

For more information on environmental noise limit and conditions please contact your local Council.

Installation - Roof Mounting - AM900 & AM900-LM

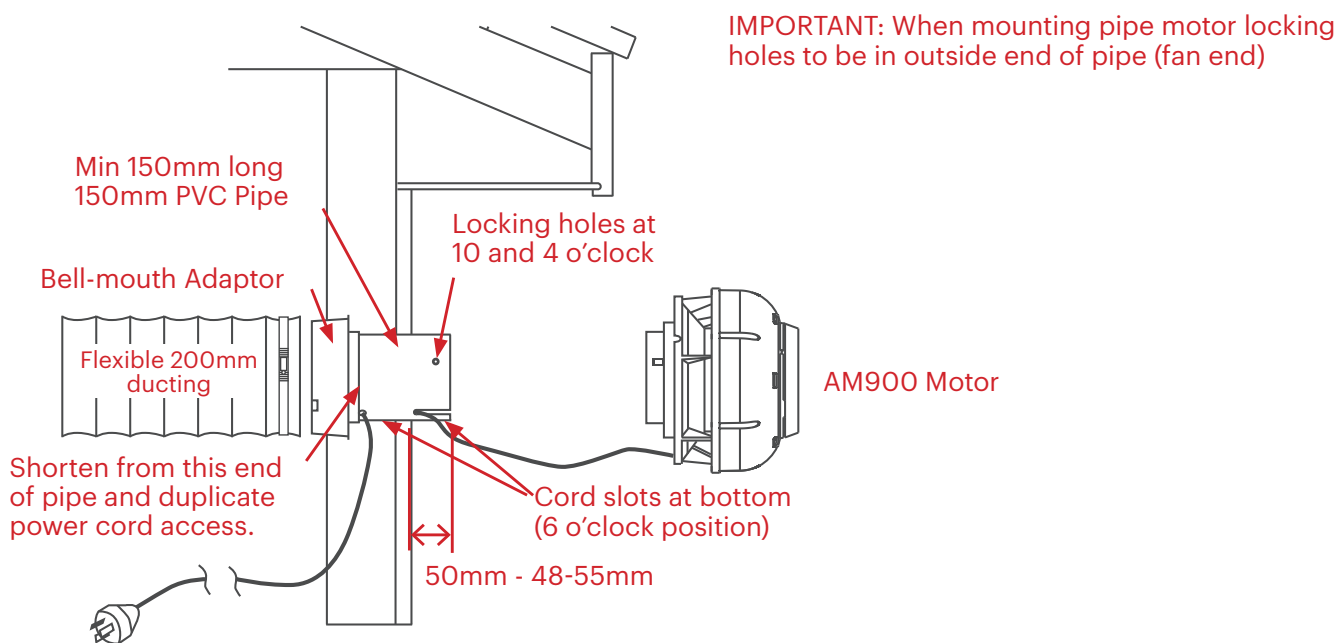
NOTE: Electrical cable access slot must face roof fallline side.



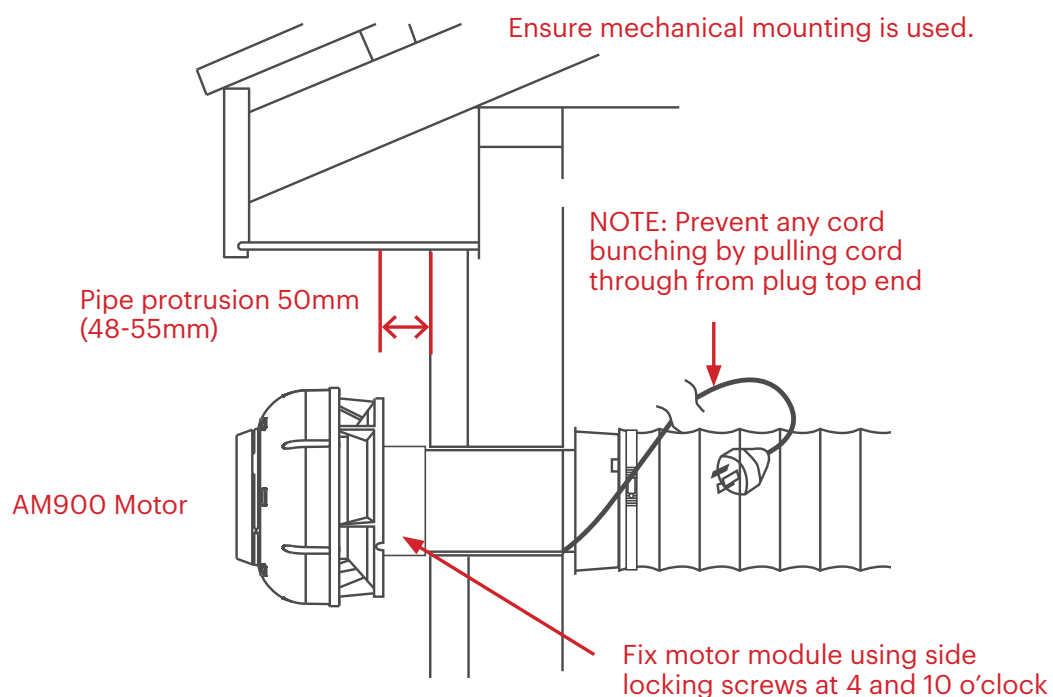
Recommended minimum duct length 3m. Extend flexible ducting. Cut to length.

Installation - AM900 & AM900-LM

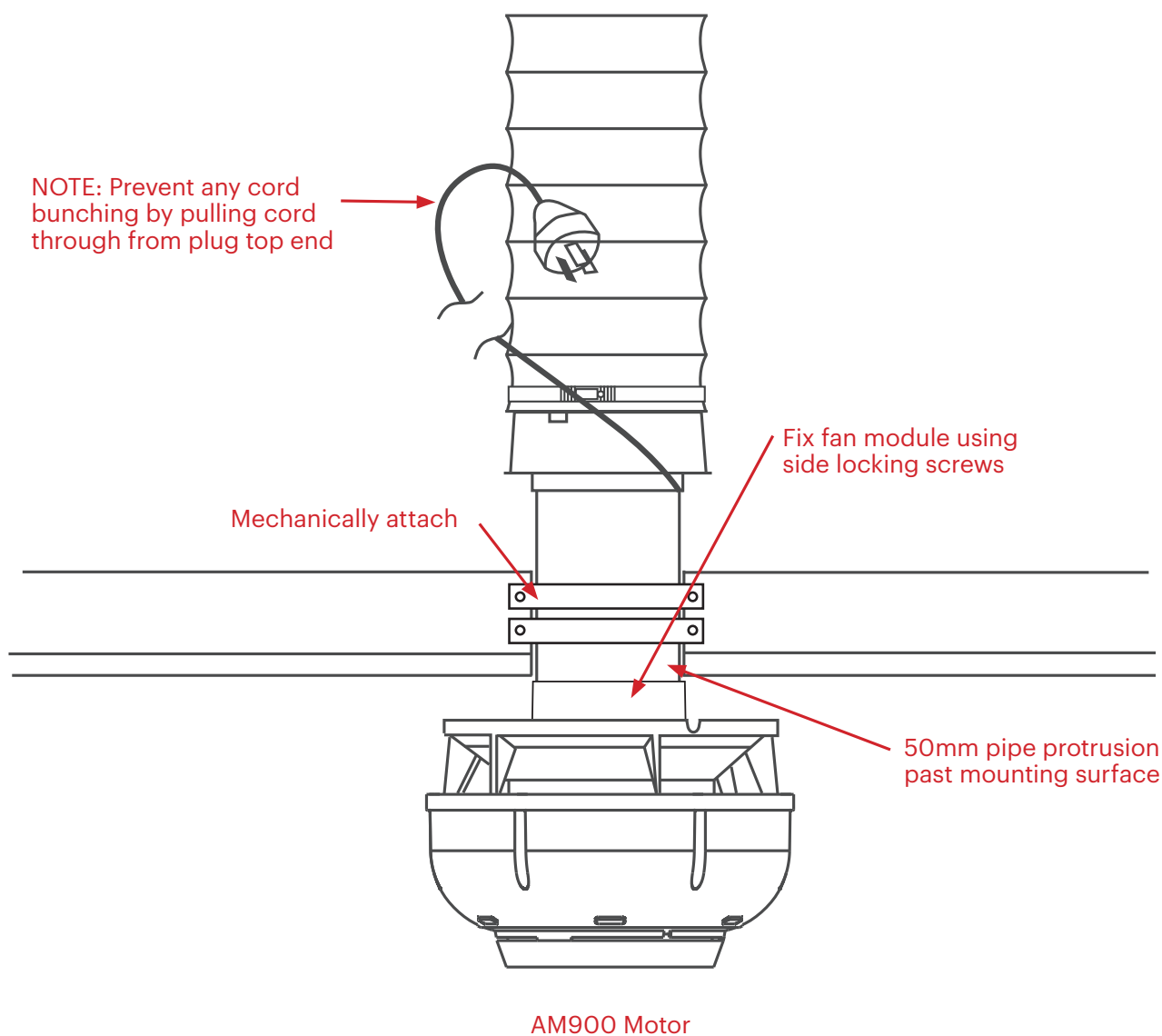
This type of installation is similar to roof mounting, ensuring that the pipe extends at least 50mm past the wall surface. If the pipe length is shortened, reproduce the power cord exit slot on the inside of the wall.



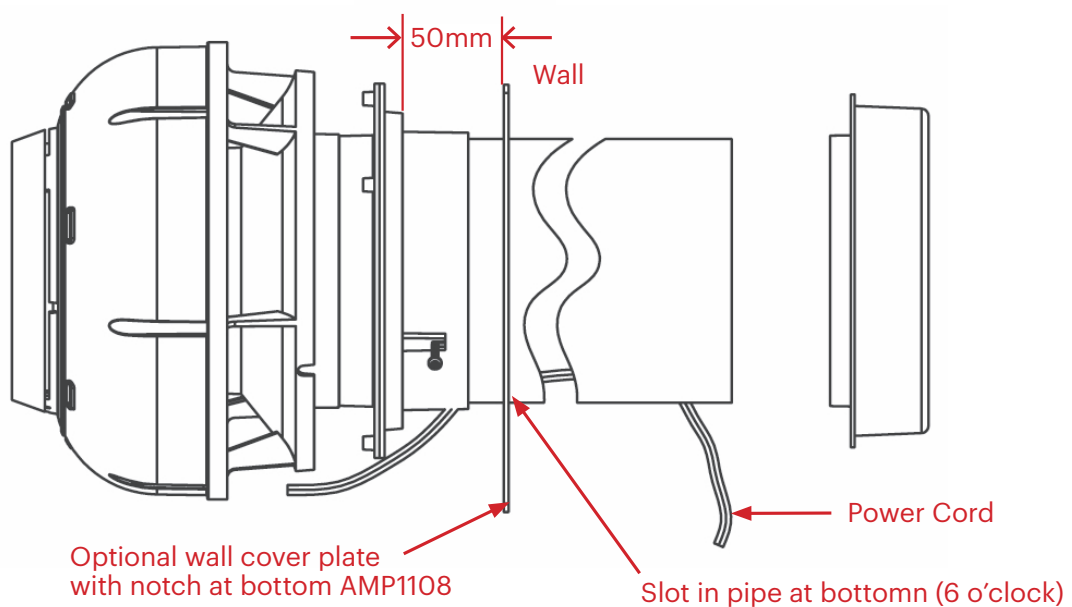
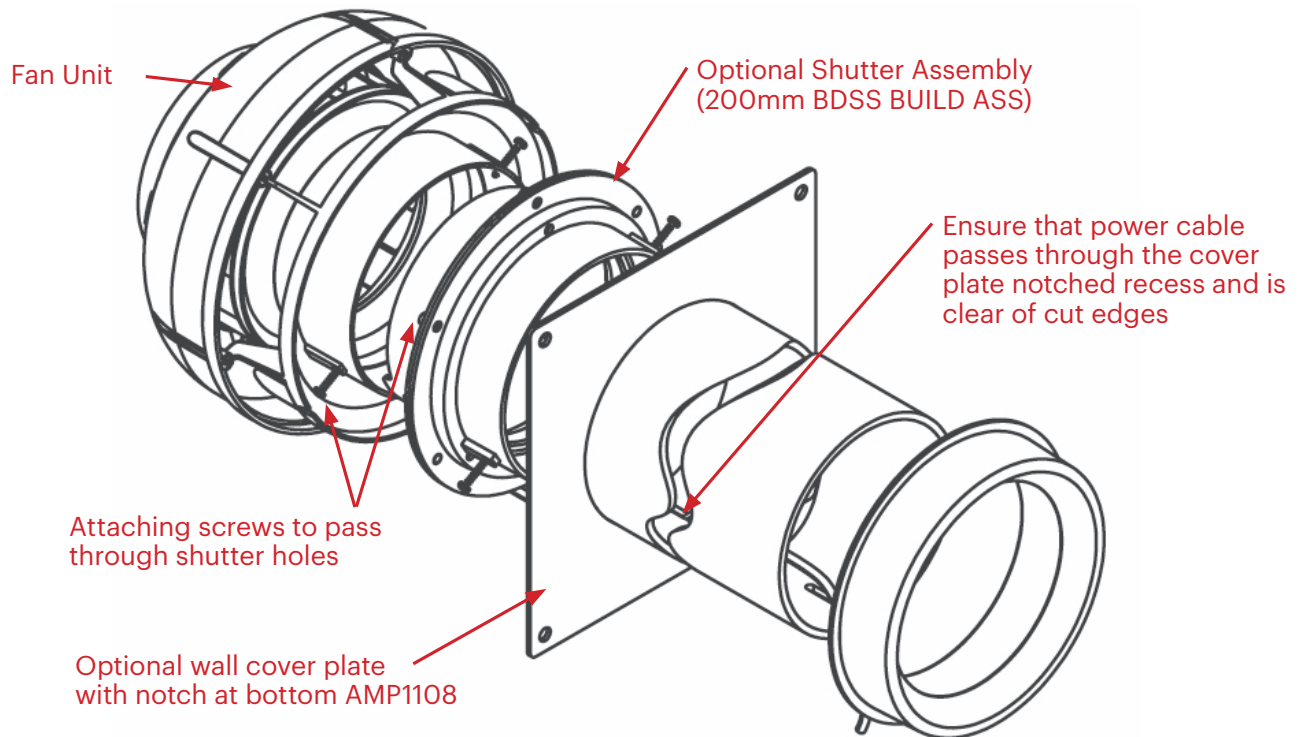
NOTE: Ensure that power cord is fed through exit slot and is not allowed to double back restricting motor inlet.



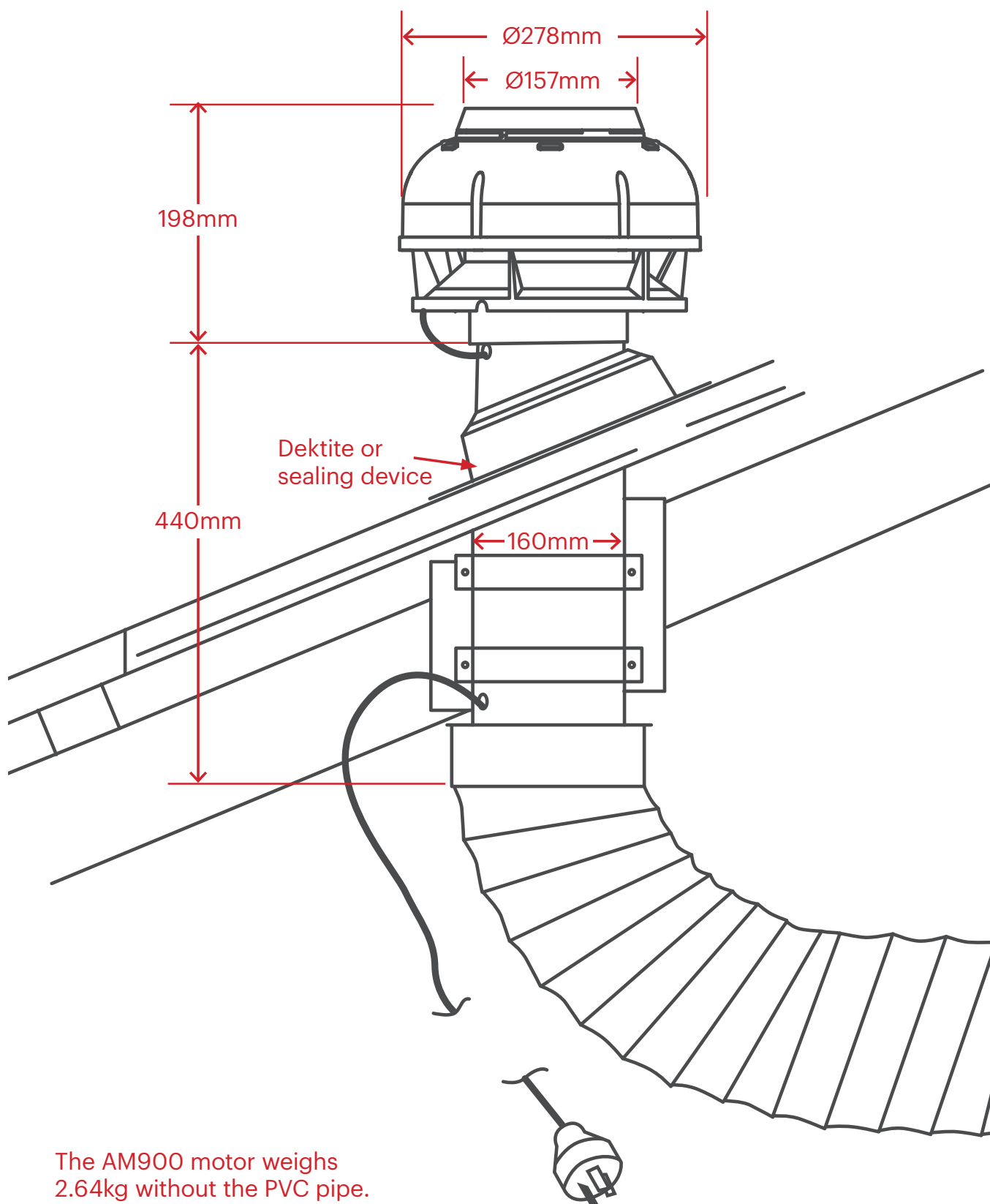
Installation - Under Eaves - AM900 & AM900-LM



Optional Installation - Through Wall for AM900 & AM900-LM



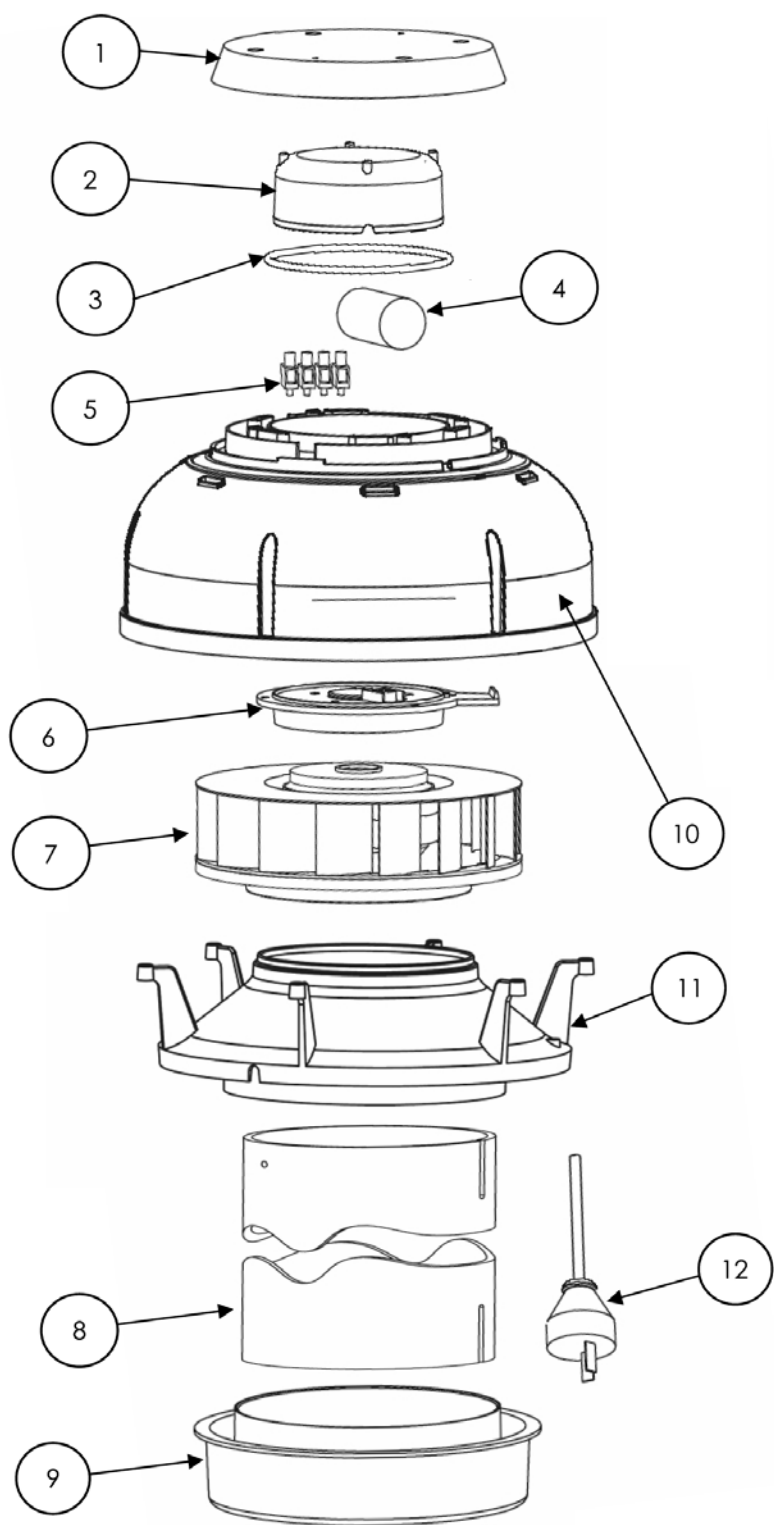
Measurements - AM900 & AM900-LM (not to scale)



Operator instructions for general purpose fan unit

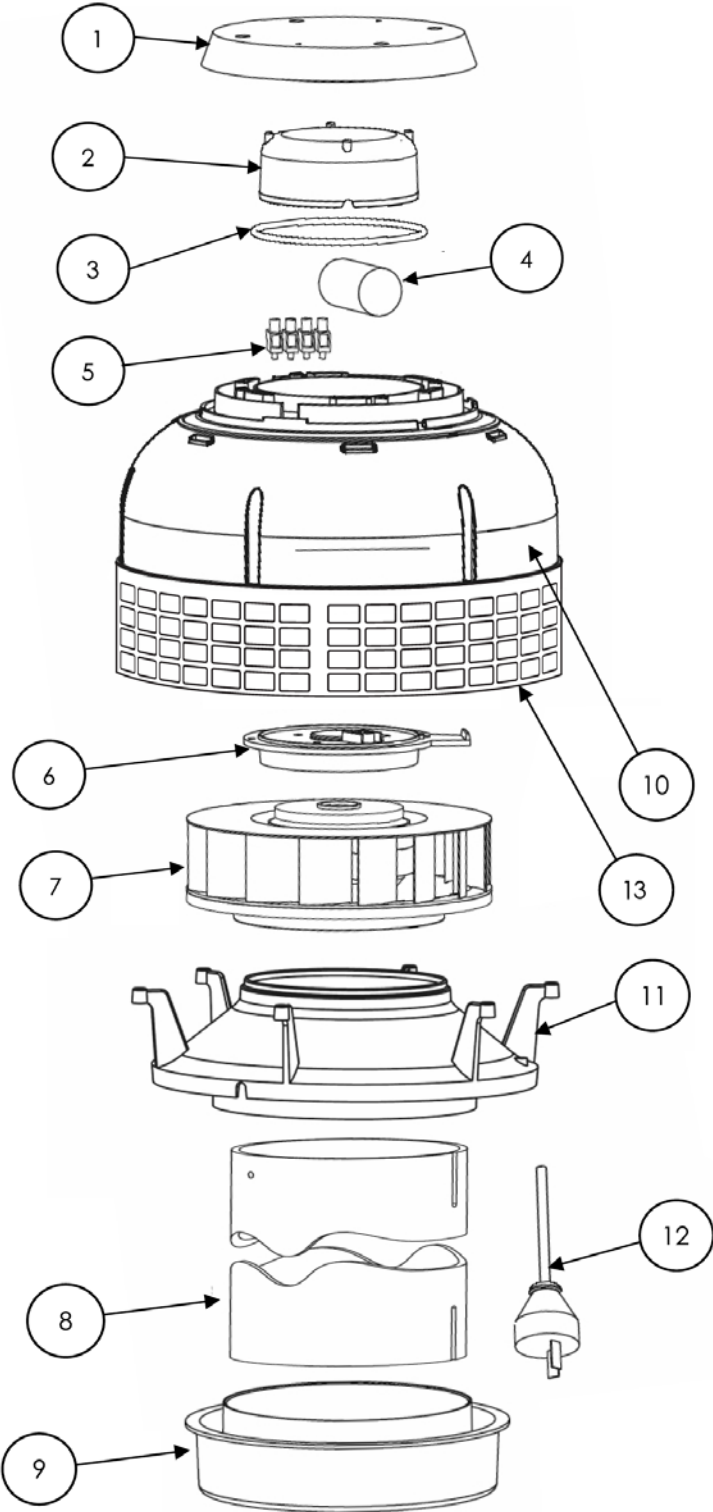
This fan is powered ON and OFF by a wall mounted switch and operated as required.
If this fan is supplied as part of another SYSTEM (rangehood or other) and is powered by that system, please refer to the SYSTEM operator instructions.

Parts List - AM900



No.	Part No.	Description	Qty
1	P40100	Terminal Block Cover	1
2	P40121	Wire Insulator Cap	1
3	P1061	O Ring 4¼" ID	1
4	P10060	Capacitor 1.5µF	1
5	P808	Terminal Block	1
6	P40102	Fan Plate – Motor Mount	1
7	P1060R	Centrifugal Fan/Motor Unit	1
8	S1069	150mm Slotted Pipe	1
9	P40110	Bell Mouth Adaptor	1
10	P40101	Fan Shroud	1
11	P40103	Fan Base	1
12	P301	Power Cable	1

Parts List - AM900-LM



No.	Part No.	Description	Qty
1	P40100	Terminal Block Cover	1
2	P40121	Wire Insulator Cap	1
3	P1061	O Ring 4 1/4" ID	1
4	P10060	Capacitor 1.5µF	1
5	P808	Terminal Block	1
6	P40102	Fan Plate – Motor Mount	1
7	P1060R	Centrifugal Fan/Motor Unit	1
8	S1069	150mm Slotted Pipe	1
9	P40110	Bell Mouth Adaptor	1
10	P40101	Fan Shroud	1
11	P40103	Fan Base	1
12	P301	Power Cable	1
13	P1112	Punched fan guard/900	1



Sales & Service

For full sales and service or if you have a question about our range of Amore Rangehoods contact:

Free Phone

0800 200 510

Email

info.parex@whirlpool.com

Hours of business

Monday - Friday,
8am - 5pm

Parex Industries Ltd

5 Tolich Place, Henderson,
Auckland 0610

amorehomes.co.nz